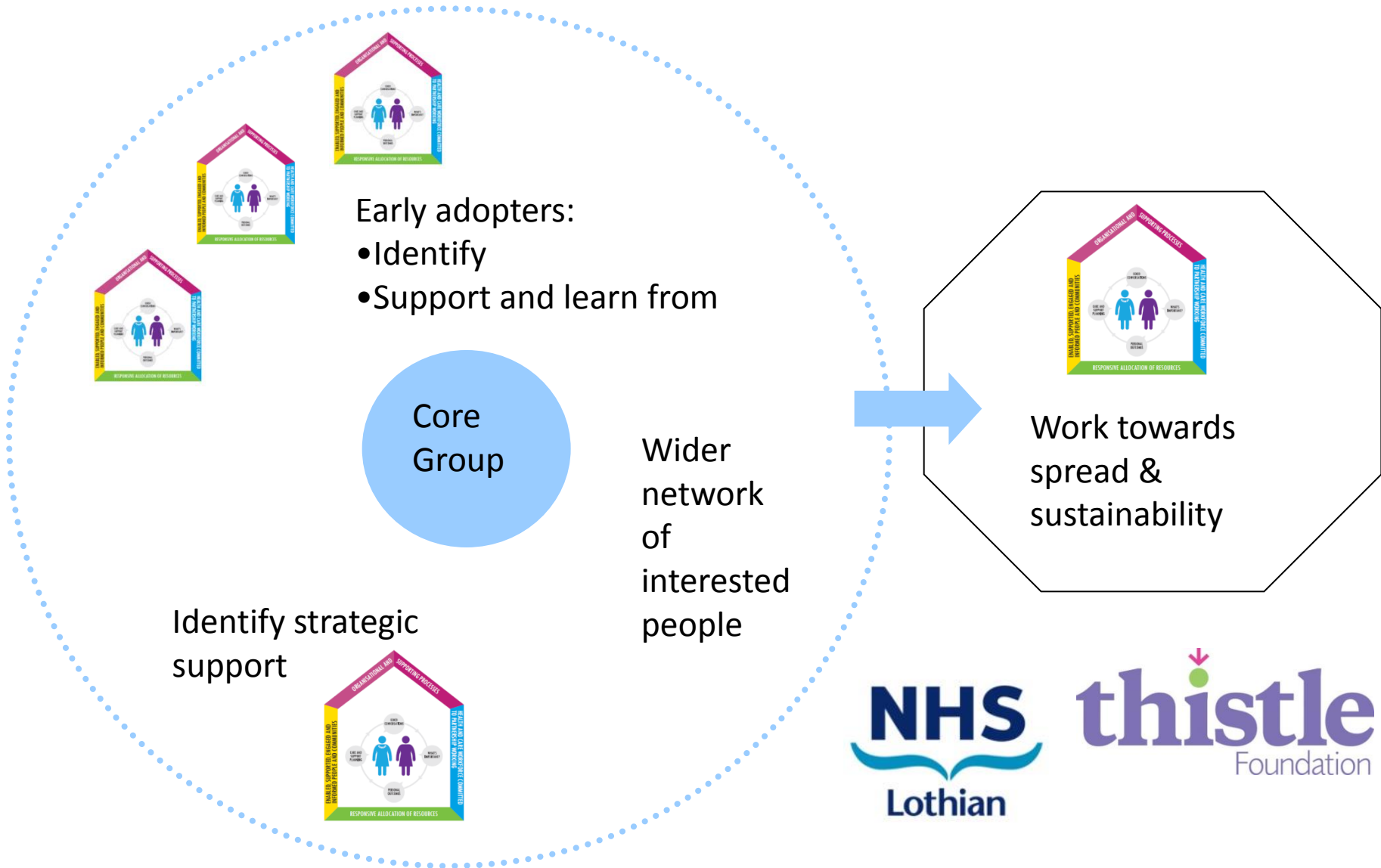


Lothian's House of Care Collaboration: enabling good conversations

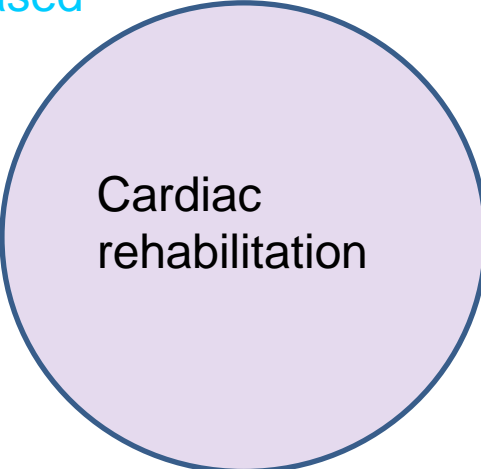
A partnership between Lothian NHS and
Thistle Foundation

Lothian House of Care Collaboration

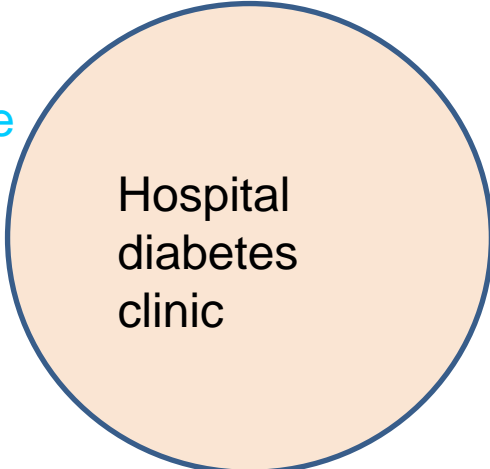


Early adopters

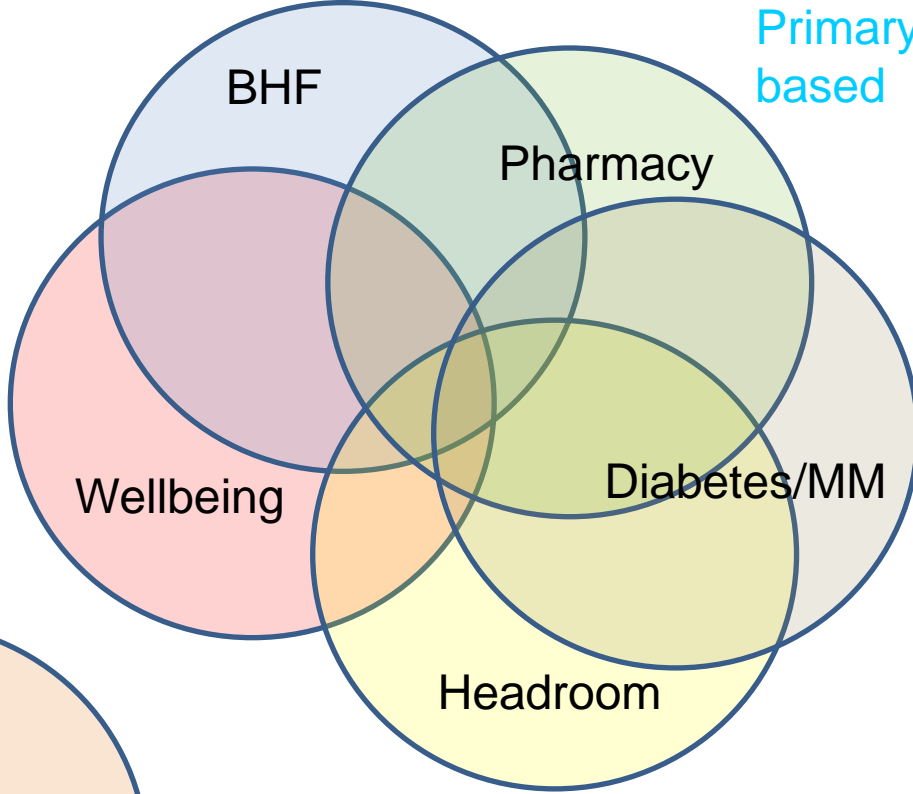
Community care based



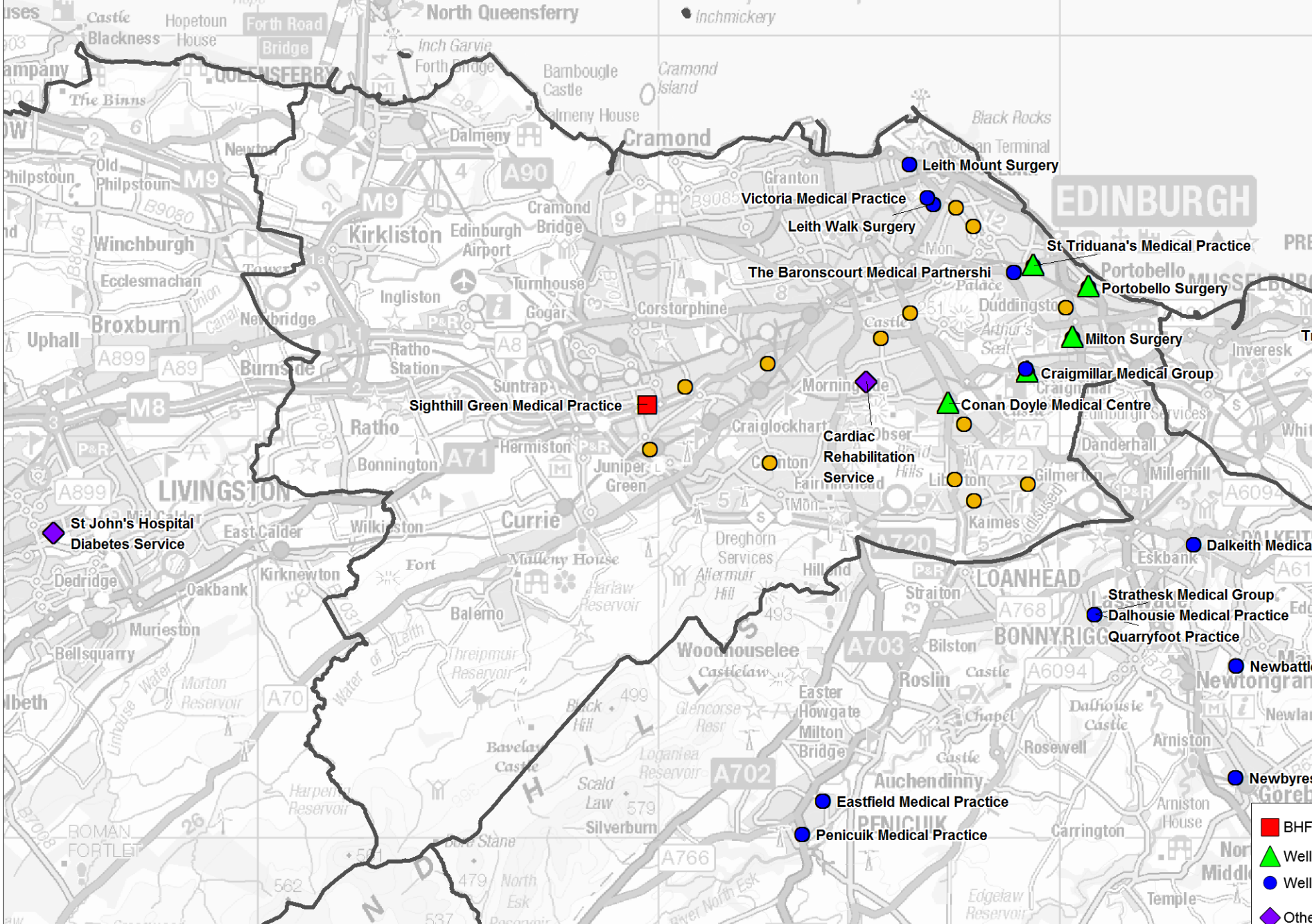
Secondary care based



Primary care based



Early adopters of the house of care approach



Support being offered

- Learning cycles: facilitated reflection
- Training to enable good conversations
- Measurement for improvement

