



Leiden University  
Medical Center

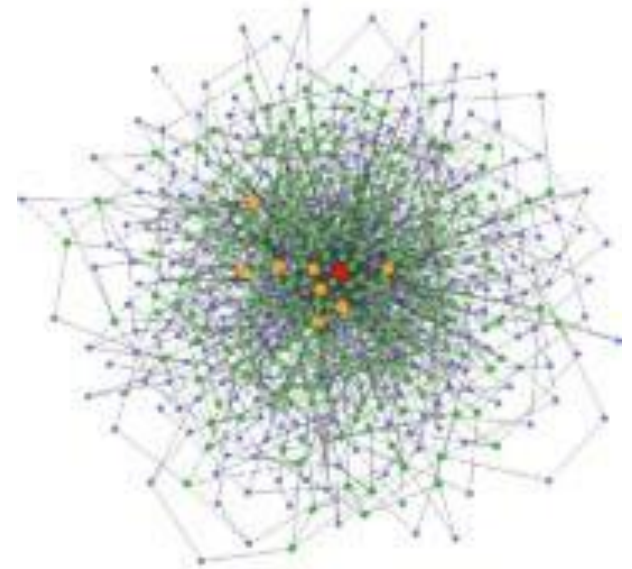
# Forum Population Health and Prevention Setting the stage

**BMC Kongress 2022**

Ass. Prof. Dr. Viktoria Stein

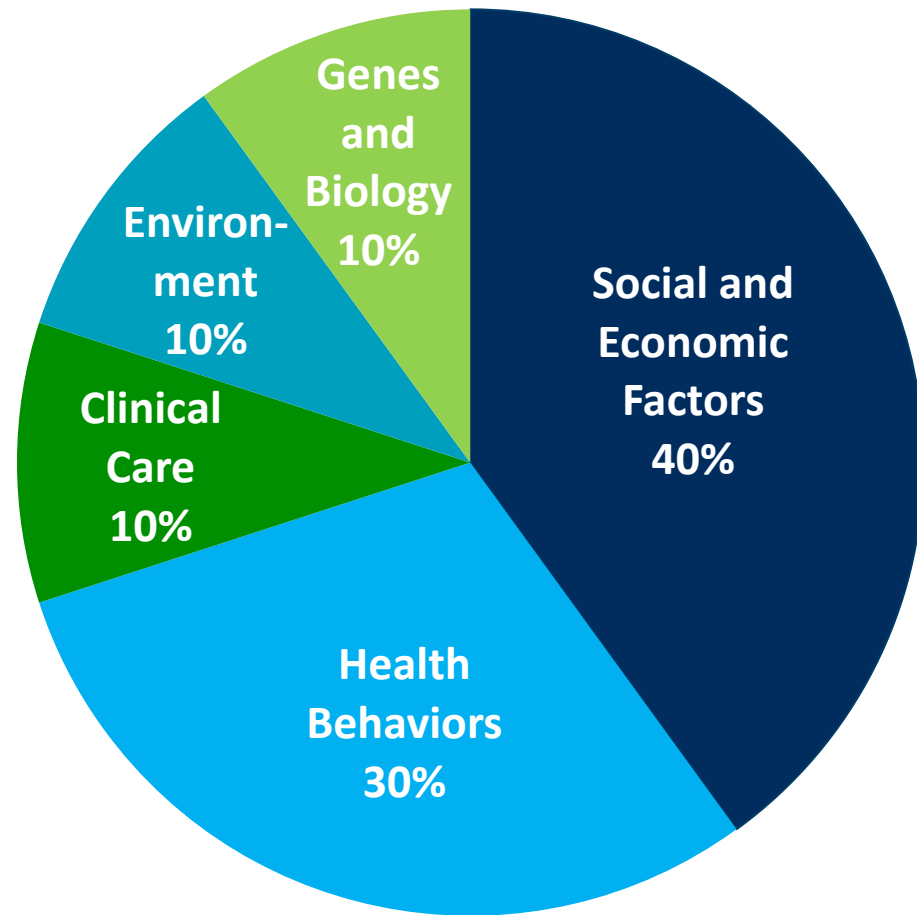
Leiden University Medical Centre, NL

VM Partners Integrating Health and Care



# Health is not created or maintained in the health care system, but everywhere else!

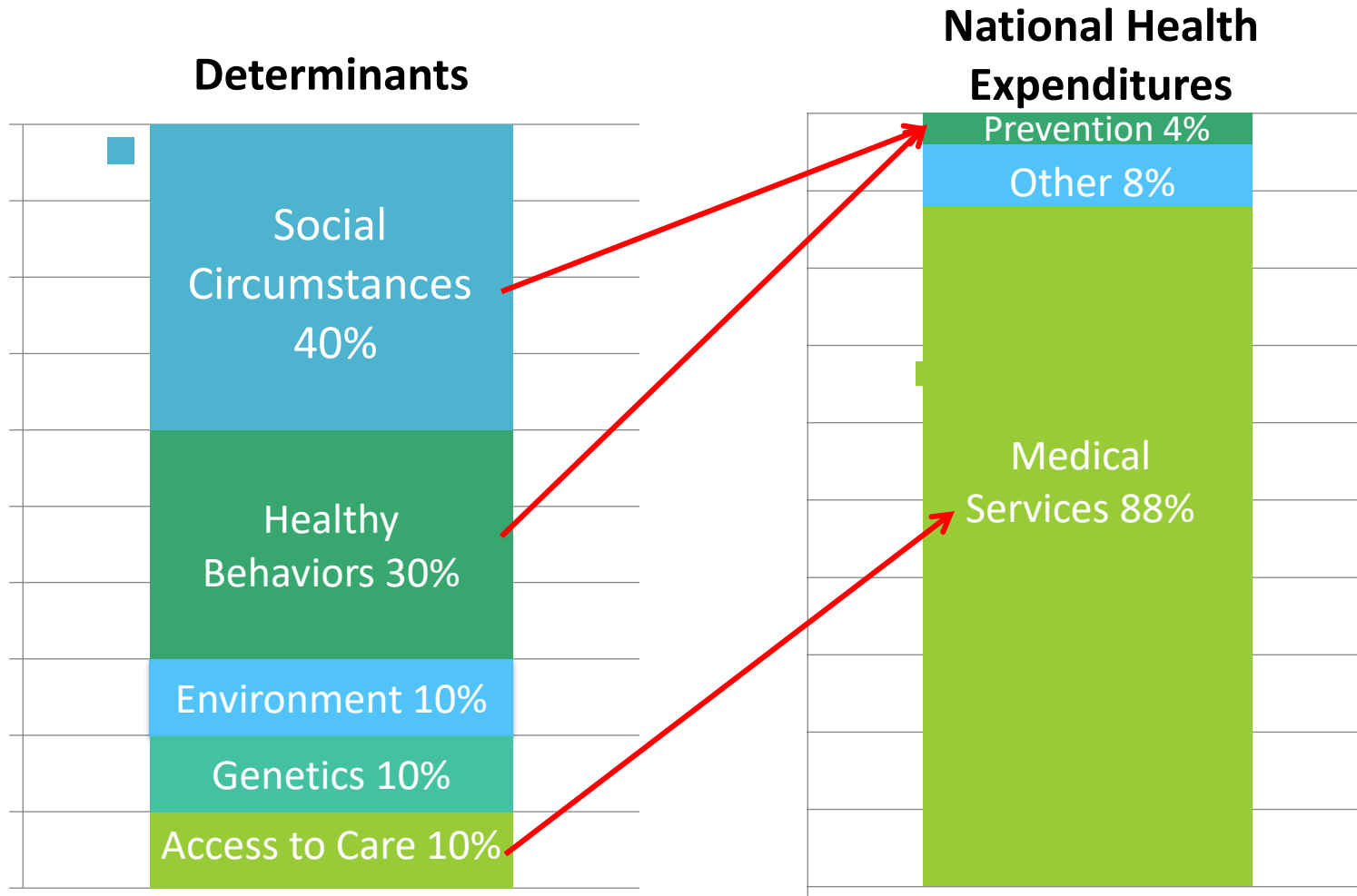
Peace  
Shelter  
Education  
Food  
Income  
Stable eco-system  
Sustainable resources  
Mobility  
Social justice and equity



World Health Organization. Ottawa charter for health promotion. International Conference on Health Promotion: The Move Towards a New Public Health, November 17-21, 1986 Ottawa, Ontario, Canada, 1986. Accessed July 12, 2002 at <<http://www.who.int/hpr/archive/docs/ottawa.html>>.

Determinants of Health Model based on frameworks developed by: Tarlov AR. *Ann N Y Acad Sci* 1999; 896: 281-93; and Kindig D, Asada Y, Booske B. *JAMA* 2008; 299(17): 2081-2083.

# The spending mismatch perpetuates a reactive, fragmented system of clinical cure



# Health care is Self care!



“We don’t need to involve patients and caregivers in healthcare, we need to involve professionals in the every day care.”



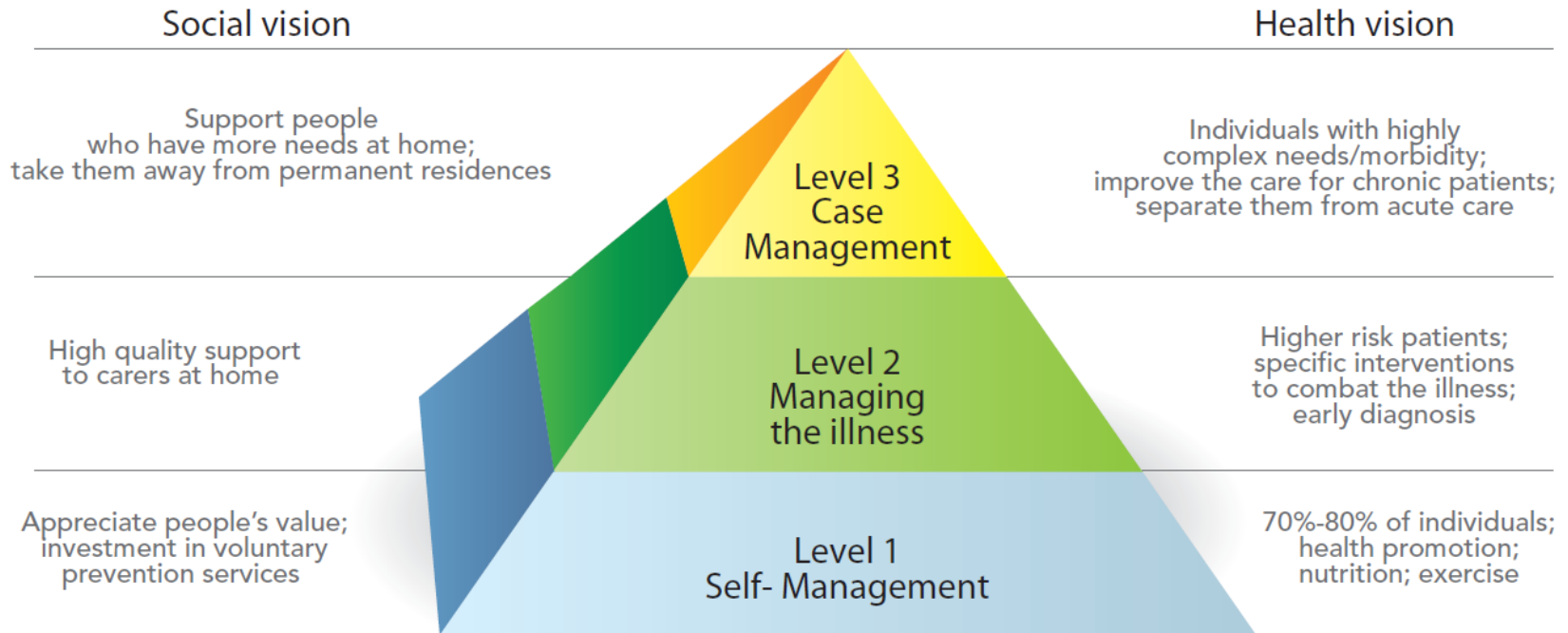


# Population Health: Organising services according to needs

Pyramid defined by King's Fund in the United Kingdom

Pyramid defined by King's Fund in the United Kingdom

Adapt the service to the individual



Source: King's Fund (C.Ham)

## The biggest challenge



<https://ahseeit.com/?qa=169370/two-things-i-hate-change-and-the-way-things-are-meme>